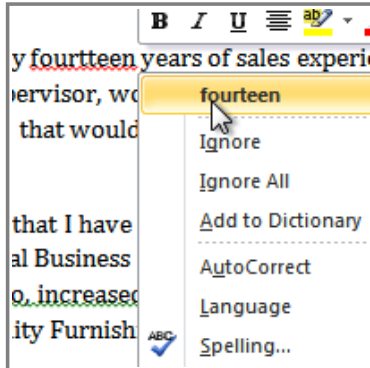




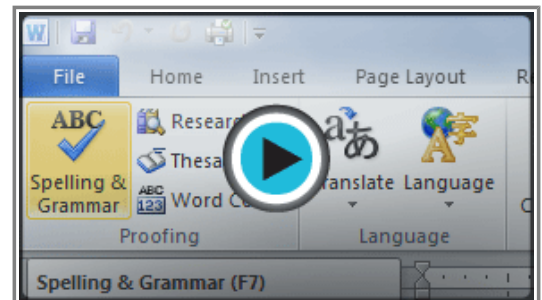
Introduction



Worried about making mistakes when you type? Don't be. Word provides you with several **proofing features** that will help you produce professional, error-free documents. In this lesson you will learn about the various **proofing** features, including the **Spelling and Grammar** tool.

Checking Spelling and Grammar

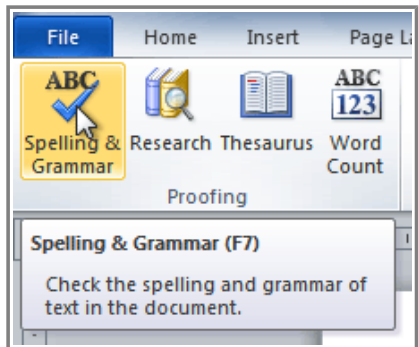
▶▶▶ Watch the video to learn how to check spelling and grammar.



Watch the video (3:07). [Need help?](#)

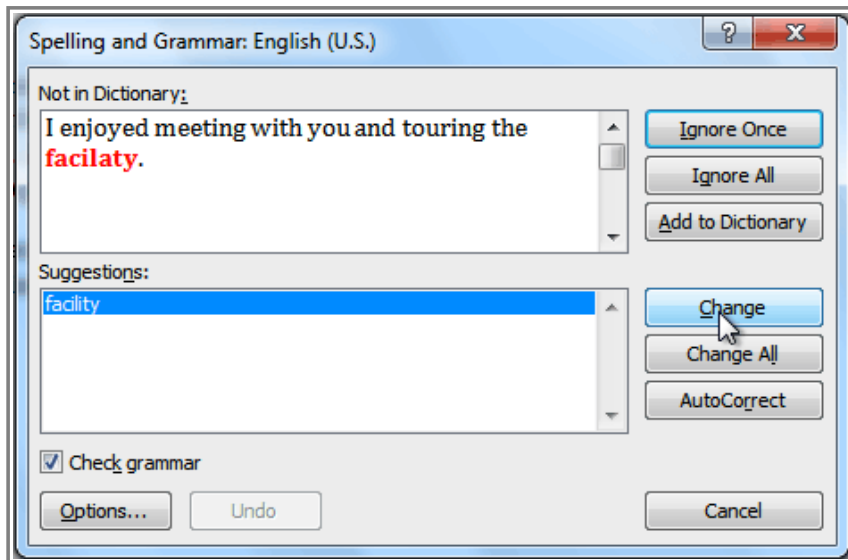
To Run a Spelling & Grammar Check:

1. Go to the **Review** tab.
2. Click on the **Spelling & Grammar** command.



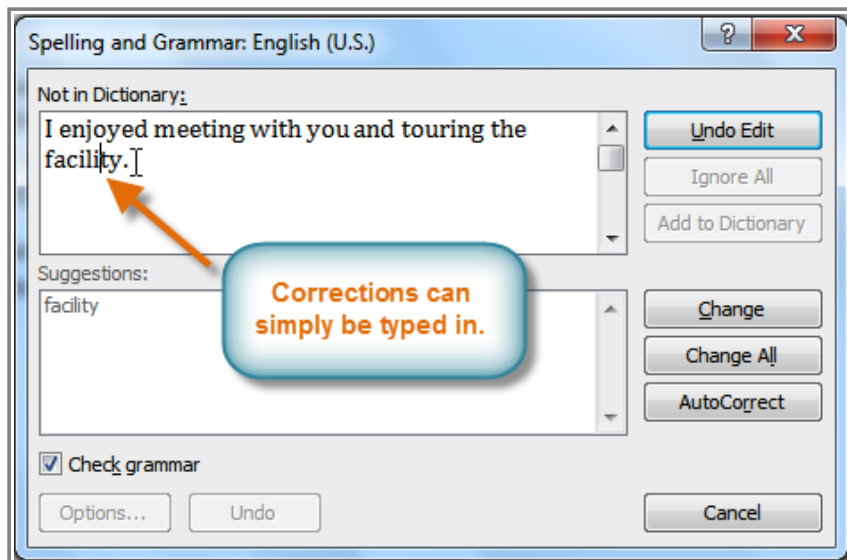
The Spelling & Grammar command

3. The **Spelling and Grammar** dialog box will open. For each error in your document, Word will try to offer one or more **suggestions**. You can select a suggestion and then click **Change** to correct the error.



Correcting a spelling error

4. If no suggestions are given, you can manually type in the correct spelling.



Typing a correction

Ignoring "Errors"

The spelling and grammar check is **not always correct**. Particularly with grammar, there are many errors that Word will not notice. There are also times where the spelling and grammar check will say that something's an error when it's actually not. This often happens with people's names, which may not be in the dictionary.

If Word says that something is an error, you can choose not to change it. Depending on whether it's a spelling or grammar error, you can choose from several options:

For spelling "errors":

- **Ignore Once:** This will skip the word without changing it.
- **Ignore All:** This will skip the word without changing it, and it will also skip all other instances of this word in the document.
- **Add to Dictionary:** This adds the word to the dictionary so that it will never come up as an error. Make sure that the word is spelled correctly before choosing this option.

For grammar "errors":

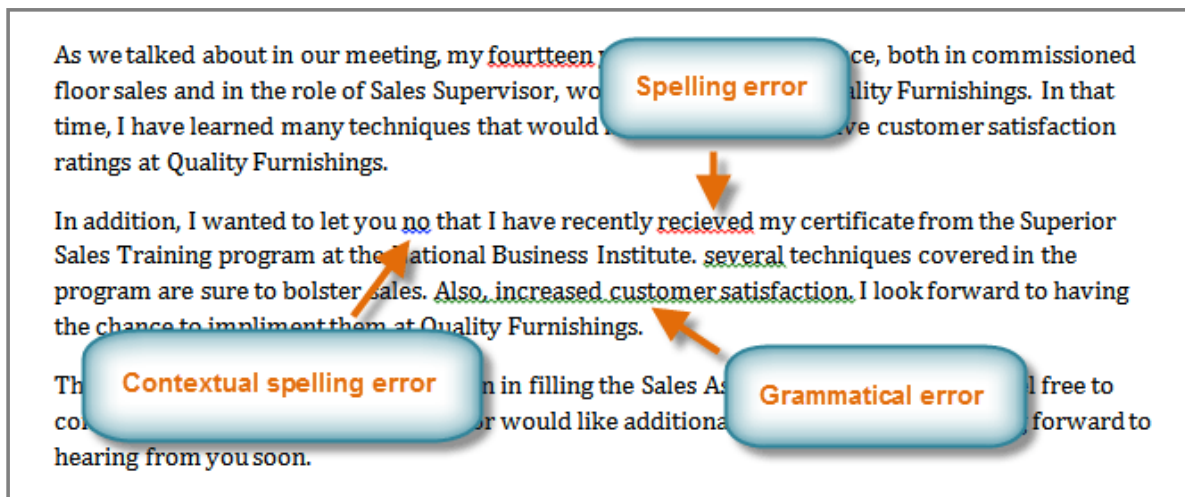
- **Ignore Once:** This will skip the "error" without changing it.
- **Ignore Rule:** This will skip this "error" as well as all other instances that relate to this grammar rule.
- **Next Sentence:** This skips the sentence without changing it, and leaves it marked as an error. That means it will still show up if you do another Spelling and Grammar check later on.

If you're not sure about a grammar error, you can click **Explain** to see why Word thinks it's an error. This can help you determine whether you want to change it or not.

Automatic Spelling and Grammar Checking

By default, Word automatically checks your document for **spelling and grammar** errors, so you may not even need to run a separate Spelling and Grammar check. These errors are indicated by **colored, wavy lines**.

- The **red line** indicates a misspelled word.
- The **green line** indicates a grammar error.
- The **blue line** indicates a contextual spelling error. This feature is turned off by default.

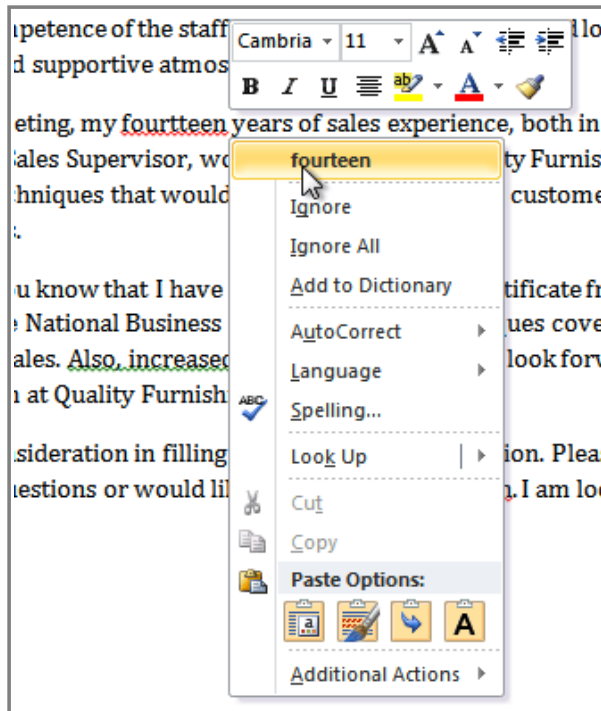


Spelling and grammar errors

A **contextual spelling** error is when a wrong word is used, but the word is spelled correctly. For example, if I write "Deer Mr. Theodore," at the beginning of a letter, **deer** is a contextual spelling error because I should have used **dear**. **Deer** is spelled correctly, but it is used incorrectly in this letter.

To Use the Spelling Check Feature:

1. Right-click the **underlined word**. A menu will appear.
2. Click on the **correct spelling** of the word from the **listed suggestions**.
3. The corrected word will appear in the document.

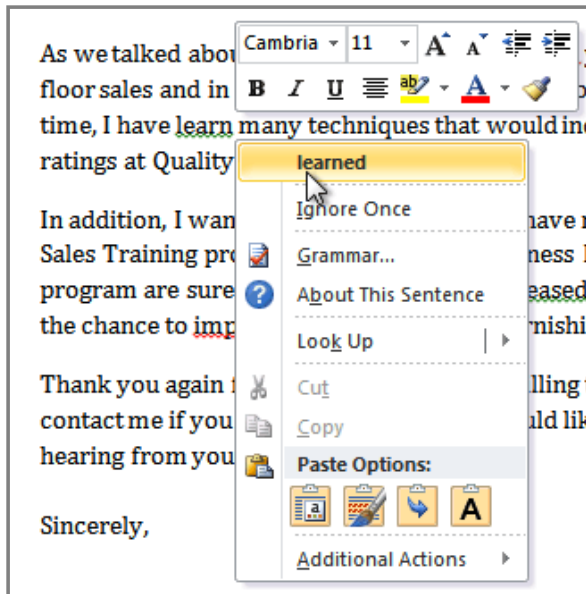


Correcting a spelling error

You can choose to **Ignore** an underlined word, add it to the **dictionary**, or go to the **Spelling** dialog box for more options.

To Use the Grammar Check Feature:

1. Right-click the **underlined word or phrase**. A menu will appear.
2. Click on the **correct phrase** from the **listed suggestions**.
3. The corrected phrase will appear in the document.

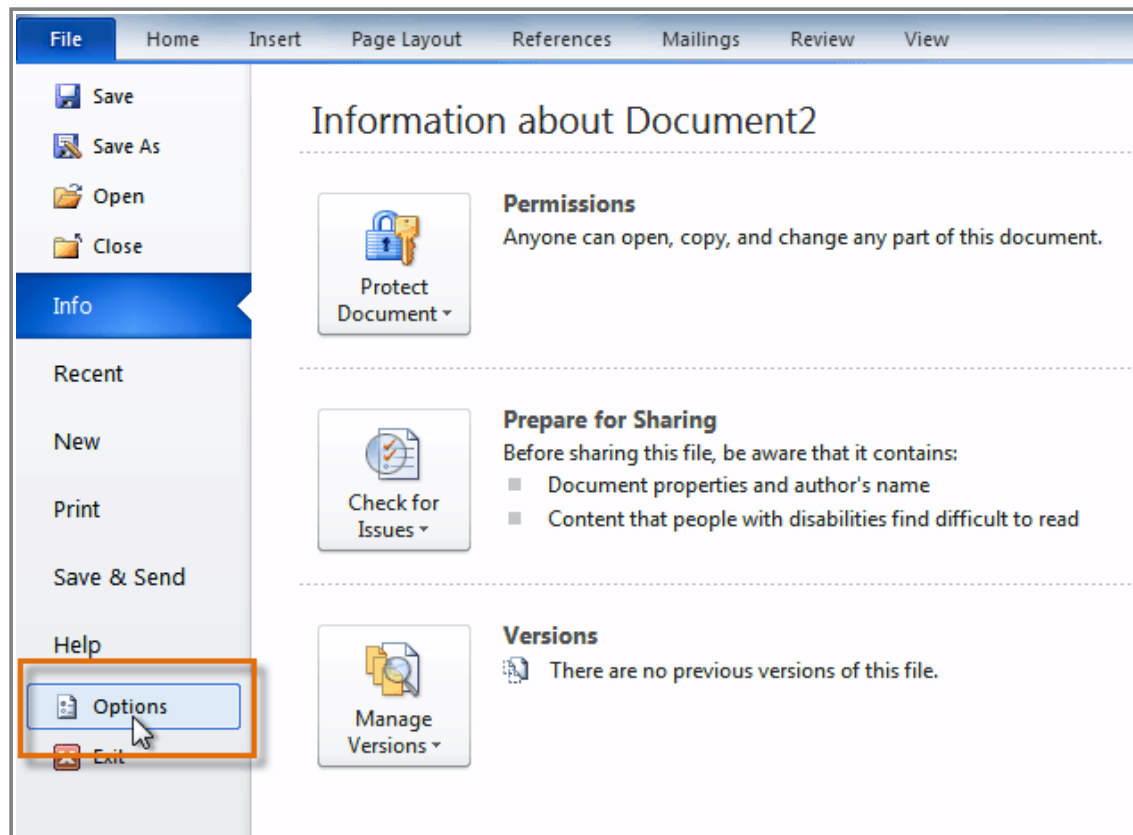


Correcting a grammar error

You can also choose to **Ignore** an underlined phrase, go to the **Grammar** dialog box , or click **About This Sentence** for information about the grammar rule.

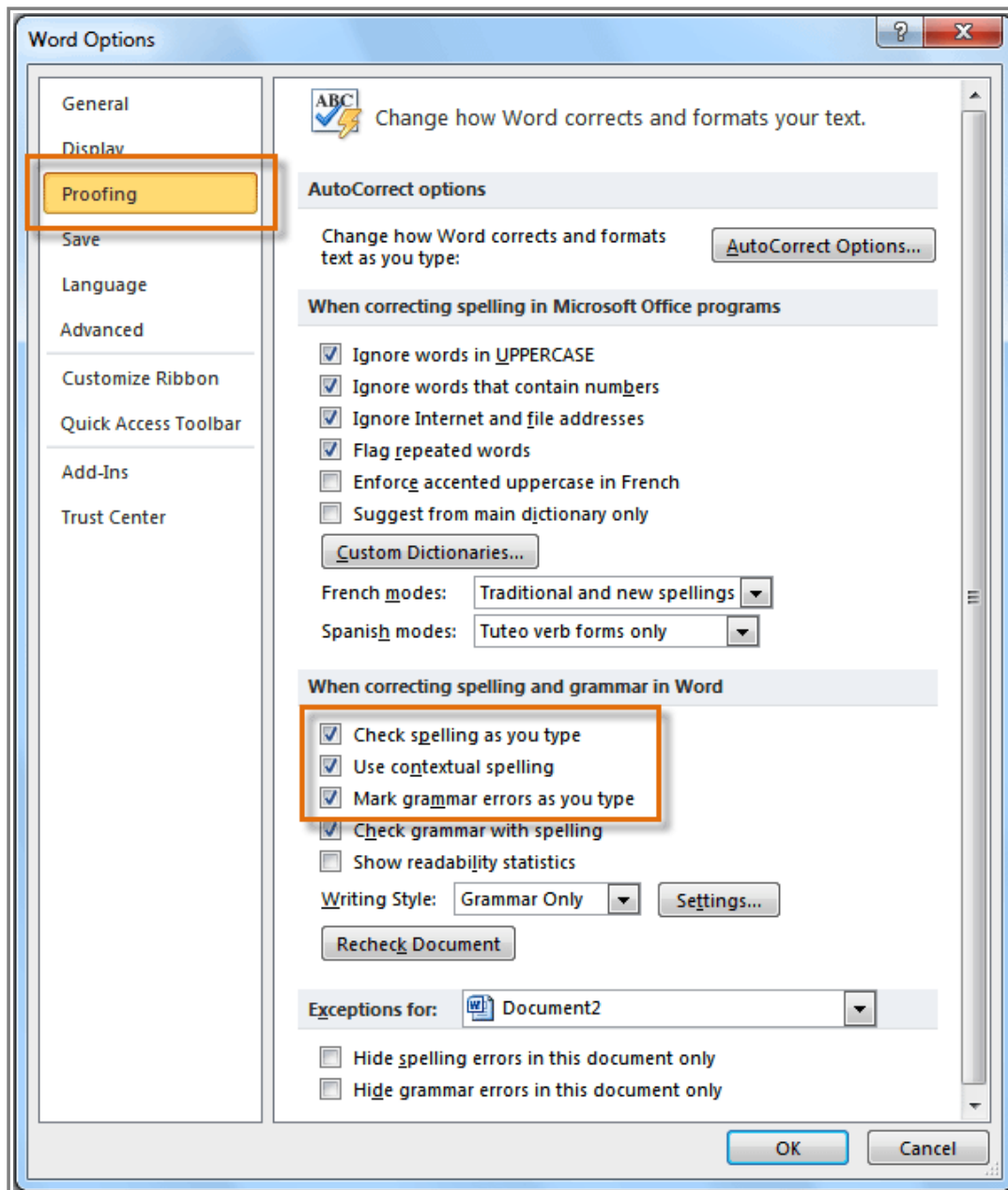
To Change the Automatic Spelling and Grammar Check Settings:

1. From **Backstage view**, click on **Options**.



Clicking the Options command

2. Select **Proofing**. The dialog box gives you several options to choose from:
 - If you don't want Word to automatically check spelling, uncheck **Check spelling as you type**.
 - If you don't want grammar errors to be marked, uncheck **Mark grammar errors as you type**.
 - To check for contextual spelling errors, check **Use contextual spelling**.



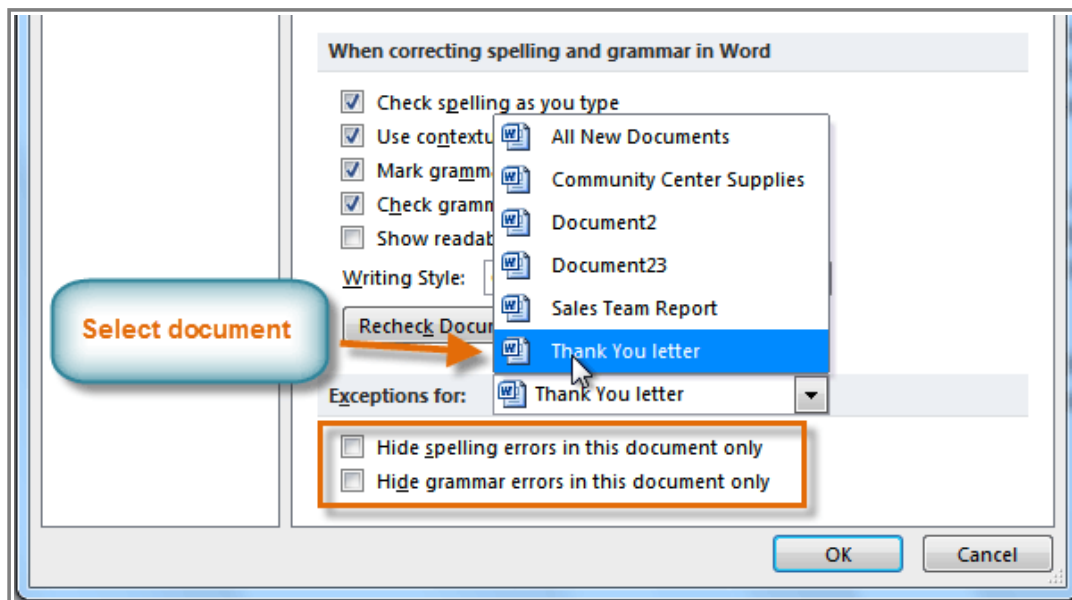
Changing the Proofing Options

If you've turned off the automatic spelling and/or grammar checks, you can still run a check by going to the **Review** tab and clicking the **Spelling & Grammar** button.

To Hide Spelling and Grammar Errors in a Document:

If you're sharing a document such as a resume with someone, you might not want them to see those annoying red, green, and blue lines. Turning off the automatic spelling and grammar checks only applies to your computer, so the lines may still show up when someone else views your document. Luckily, you can hide spelling and grammar errors in a document so that the lines will not show up on any computer.

1. From **Backstage view**, click on **Options**.
2. Select **Proofing**.
3. In the drop-down box next to "**Exceptions for:**" select the correct document (if you have more than one document open).



Creating exceptions for a document

4. Put a checkmark next to **Hide spelling errors in this document only** and **Hide grammar errors in this document only**.
5. Click **OK**.

Challenge!

1. Open an **existing Word document**. If you want, you can use this [example](#).
2. Correct the **spelling errors**.
3. Correct the **grammar errors**.

