

PhotoShop Marble

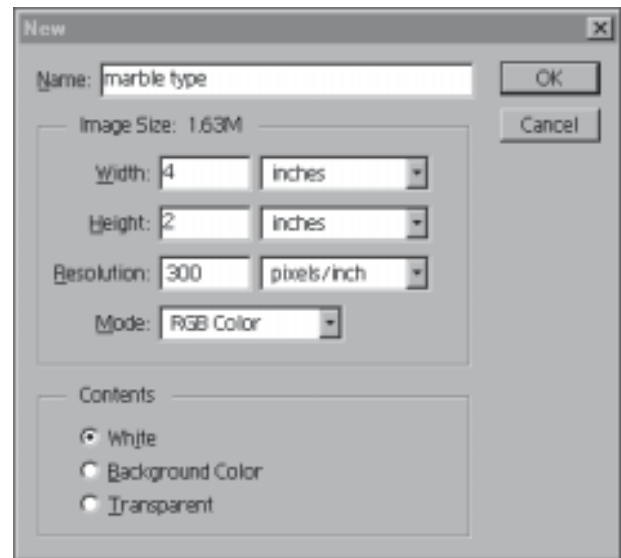
MARBLE

1. Choose **New** from the File menu
2. The **New** dialog box appears
Enter “**Marble Type**” in the name field.
Use the tab key to move around the dialog box
and enter the data as follows:

Width: 24 picas
Height: 12 picas
Res: 300 pixels/inch

Make sure that **RGB Color** is chosen under the **Mode** pop up menu.

Click OK.
Your new window should appear.

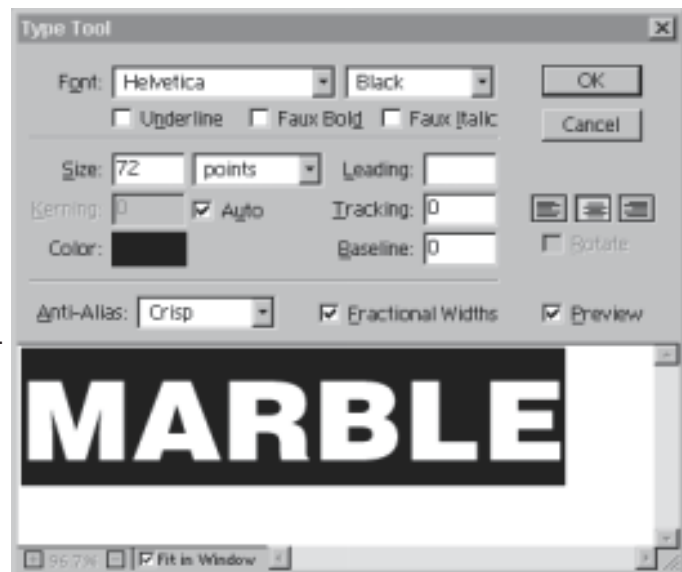


3. Choose the **type tool** from your toolbox and click in the middle of your window.

4. The “Type Tool” dialog box will appear. Use the tab key to move around the dialog box and enter the data as follows:

(note: If you are using Photoshop 6 a flashing cursor will appear on your screen. Type your headline and change the text attributes in the options bar at the top of your screen)

Font: Impact
Size : 58 points
Center Alignment



PhotoShop Marble

6. Click once in the text field and a cursor will appear.

Type: **Marble** (your headline)

Click OK and your type should appear on a separate layer

7. Go to the top of your screen and choose **Layer/Type/Render Layer**
8. Go to your layers palette and make sure **preserve transparency** is checked for your text layer.

Hold down the control key and click on your text layer.
This should select only the type.

9. Go to the top of your screen and choose **Filter/Render/Difference Clouds**

MARBLE

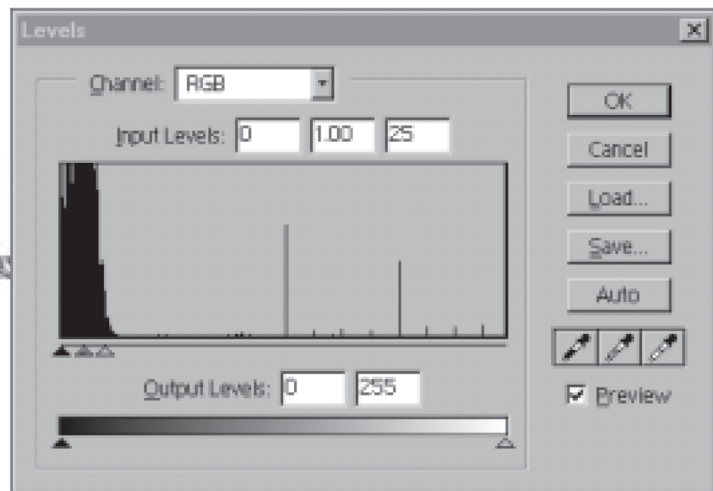
10. Go to the top of your screen and choose **Filter/Stylize/Find Edges**.
11. Go to the top of your screen and choose **Image/Adjust/Invert**.
This will turn your type almost black.
12. We will now create the marble effect. Go to the top of your screen and choose **Image/Adjust/Levels**.

The "Levels" dialog box should appear

PhotoShop Marble

13. In the input levels area, **position all three sliders so they are positioned under the highest part of the graph as shown. Click OK.**

MARBLE



14. Go to the top of your screen and choose **Layer/Flatten Image**
Choose **File/Save As/** and select **Photoshop EPS** or **Tiff** format.

PhotoShop

Marble