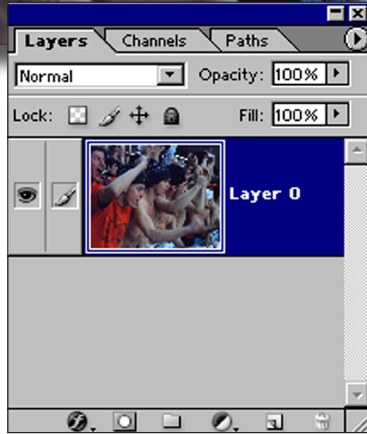
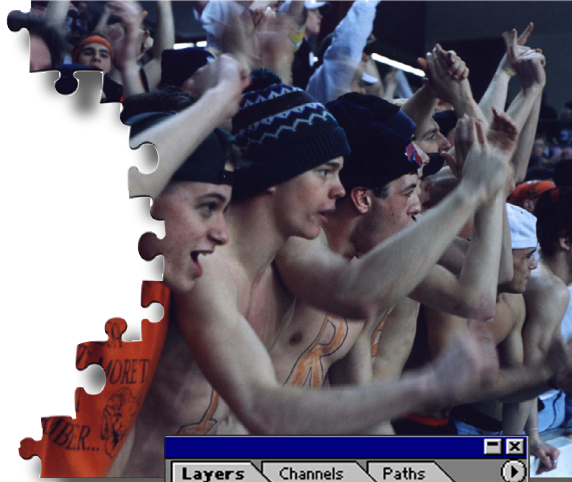


# Photoshop Puzzle Piece Edge



To add a puzzle piece edge to a collage, you will need to first have a completed collage in Photoshop. These instructions assume that has already been created. For collage instructions, call Jostens Technical Support at 800-328-2435

Make sure if you haven't done so already that the file follows the digital imaging guidelines listed in the 2006 YearTech User's Guide. Verify the image is the correct resolution, size and mode.

1. Open the collage or photograph in Photoshop. File > Open and find the collage file. Make sure there is only one layer in the file. If this has not been done, Layer > Flatten Image.

2. Open the Layers palette, Windows > Layers, double-click on the word Background Layer and it will change into Layer 0.

3. Go to the Layer > New Layer.

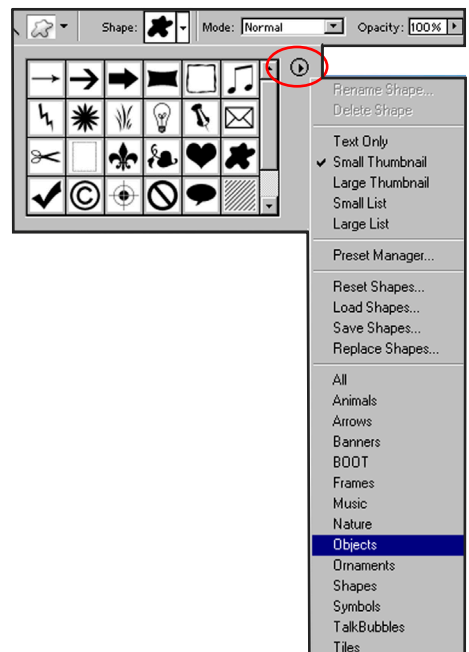


Custom Tool Option Bar

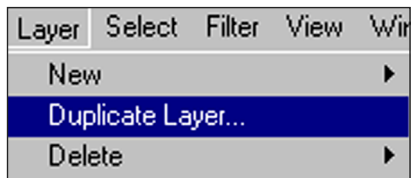


Select this 3rd shape option

4. Select custom shape tool in the custom shape option box located at the top, make sure the third option for a shape is selected. Click the drop down menu to see all the shapes available. To load the puzzle shapes, click the pop-out menu and choose Objects. Four different puzzle shapes should appear as choices for shapes. Select one of the shapes draw over the photograph or collage.



# Photoshop Puzzle Piece Edge



5. After you create the shape on the New Layer, go to Layer > Duplicate Layer, move the item on the duplicated layer with the move tool and reposition. Remember the goal is to make a puzzle edge, so do not concentrate on fitting the puzzle pieces tightly together.

6. Repeat step 5 multiple times until you have designed an edge.

7. Hide the Layer 0 in the Layers palette by clicking the eye icon to the left.

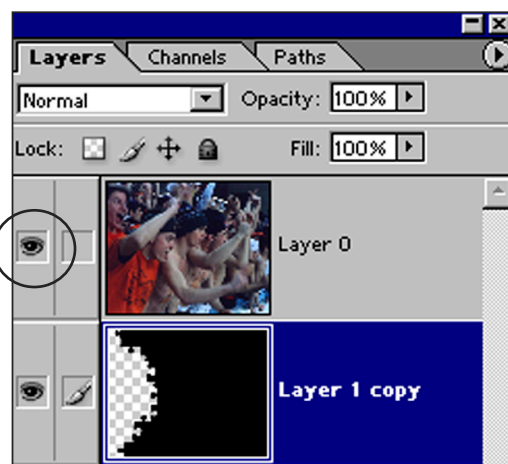
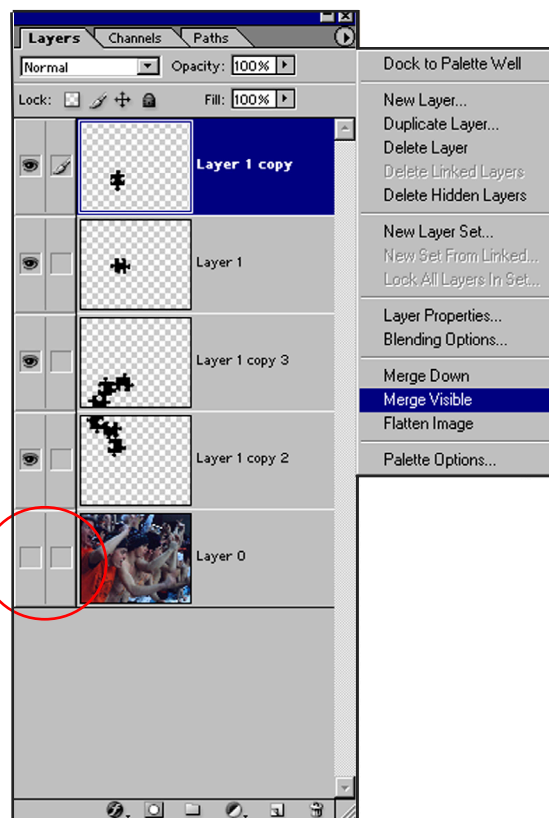
8. Click the pop-out menu on the Layers palette and go to Merge Visible. This will flatten the layers above Layer 0 but not Layer 0 itself.

9. Fill in the remaining area on the shape layer with black. To do this, first use the lasso tool to select the extra space that needs to be filled in. Again, remember we are trying to form a puzzle edge. To fill the selected area with black, use the paint bucket to select the area inside the lasso selection. Make sure Fill & Stroke box is set to the default. Black on top, white on bottom.

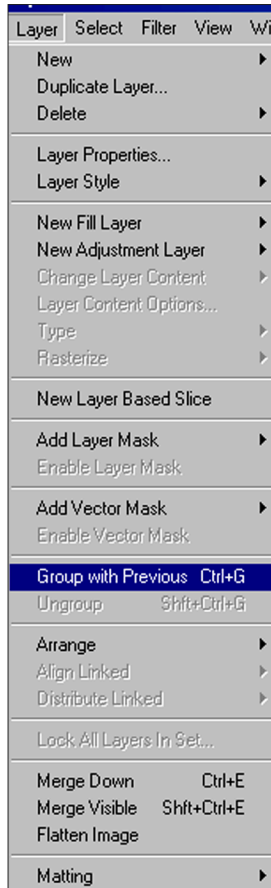


Your layer should look like Layer 1 copy in the screen shot below.

10. Take Layer 0 and drag it to the top of the Layers palette. Make sure the Show Layer eye is back, so the collage layer can be seen.



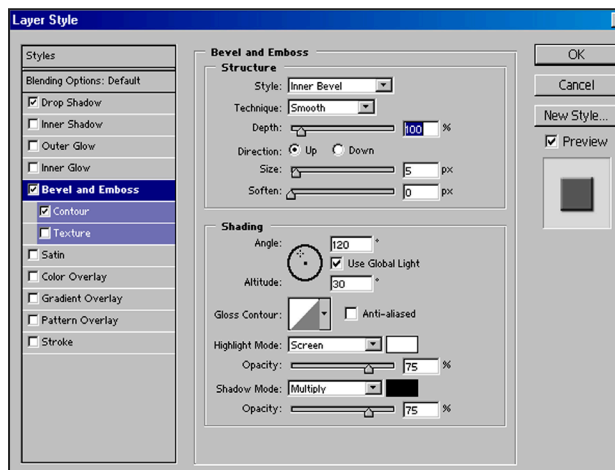
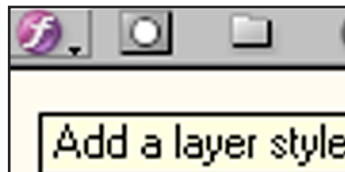
# Photoshop Puzzle Piece Edge



11. With Layer 0 still selected, go to Layer > Group with Previous (Photoshop 7) or Create Clipping Mask(Photoshop CS or CS2).

12. In the Layers palette pop-out menu go to Merge Visible again. This should create only one layer for the document.

13. Add a Layer style by clicking on the Layer style button at the bottom of the Layer palette. The styles used in this example, was Bevel and Emboss and Drop Shadow. Play with these options to achieve your desired look.



14. After applying the styles, go to Layer > Flatten Image and Save As a Tiff or Jpeg file. In InDesign or PageMaker, go to the File > Place to place the graphic file.

